

A dense, dark green background of tropical palm fronds, creating a lush and textured environment. The leaves are long and slender, with prominent veins, and are arranged in a way that fills the entire frame.

BEACH HOTEL

CARIBBEAN ART DE VIVRE

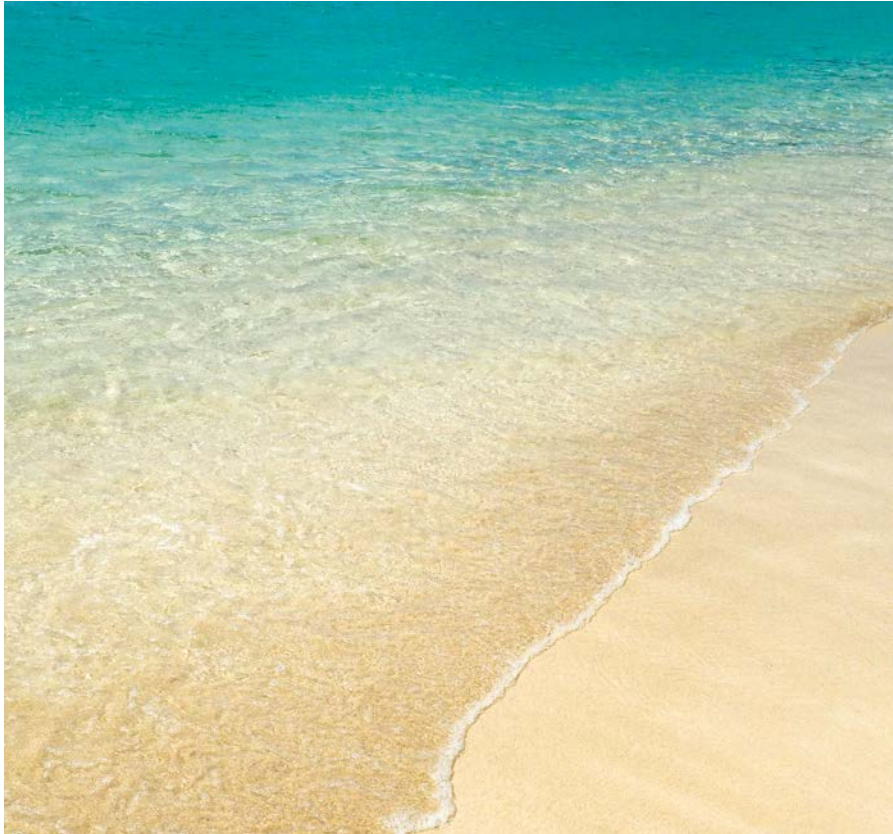
(NEW NAME PENDING)

SAINT-MARTIN FRENCH WEST INDIES

An aerial photograph of a tropical beach. The top half of the image shows the turquoise ocean with gentle waves washing onto a light-colored sandy shore. Below the water, two long, parallel rows of beach umbrellas are set up. The top row consists of numerous yellow umbrellas, while the bottom row features blue and orange umbrellas. Small figures of people are scattered across the sand, some near the water's edge and others further inland. The overall scene is bright and sunny, with high contrast between the sand, water, and umbrellas.

SAINT-MARTIN

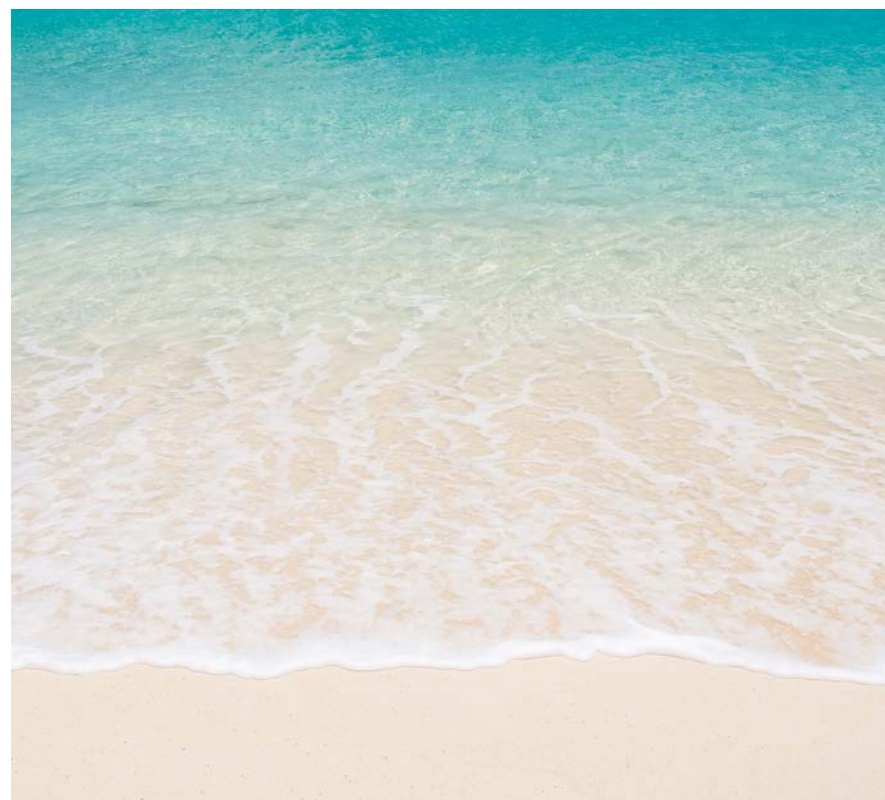
SINT MAARTEN





An aerial photograph of a vast, turquoise sea. Numerous small, white boats are scattered across the water, some appearing to be anchored or moving slowly. The water's clarity reveals dark, rocky patches beneath the surface. The overall scene is serene and expansive.

LES RACINES



SAINT-MARTIN

D'OÙ VENONS-NOUS ?

Built in the 90' for an opening in 1996, the Beach Hotel was for 20 years the hotel reference in Marigot, the main district of the French side.

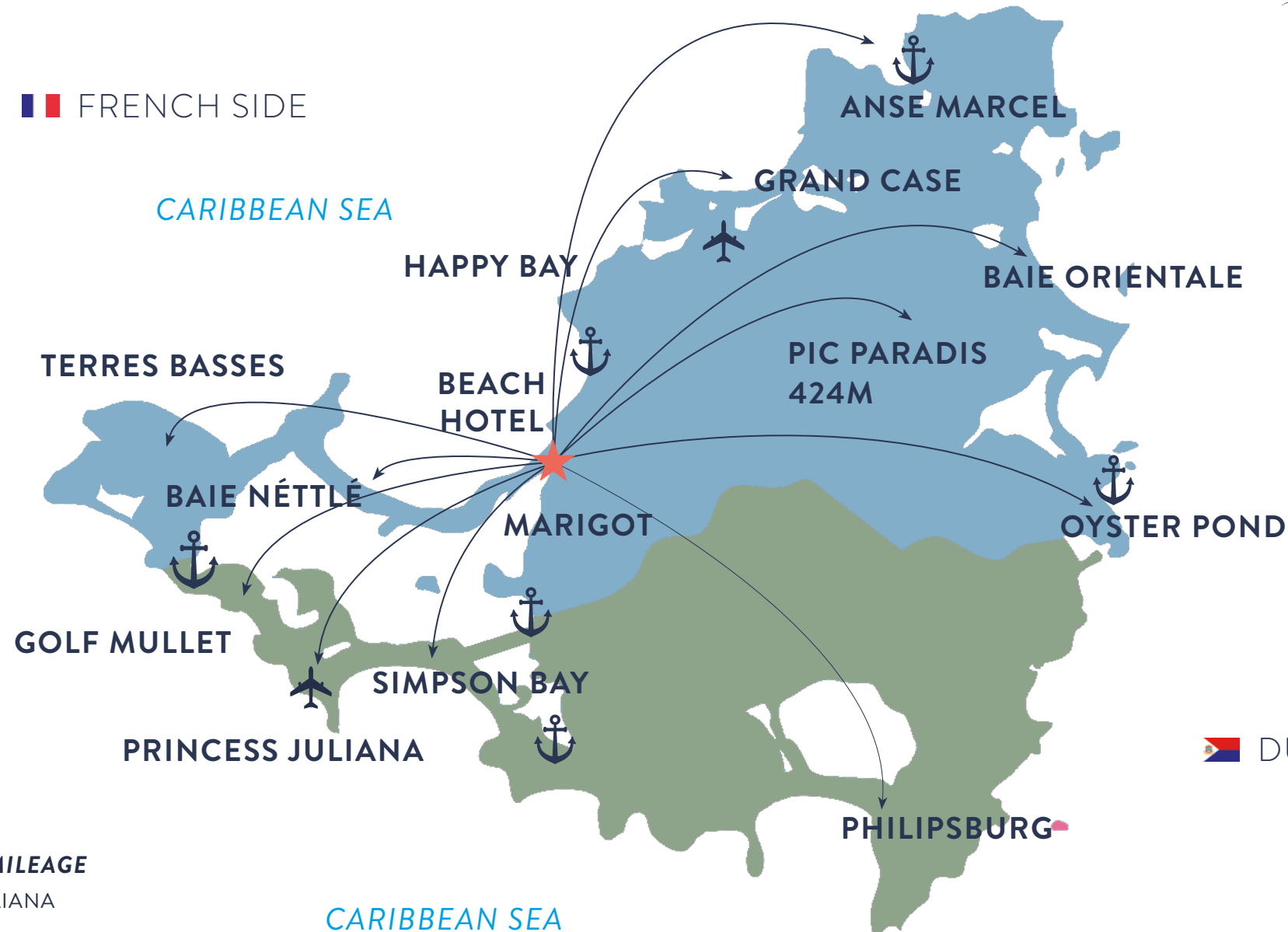
This socially-conscious hotel was the meeting place for both the business world and international tourists desiring to enjoy the beach, the urban position and the many restaurants and shops.



 FRENCH SIDE

CARIBBEAN SEA

ATLANTIC OCEAN



 DUTCH SIDE



DISTANCE / MILEAGE

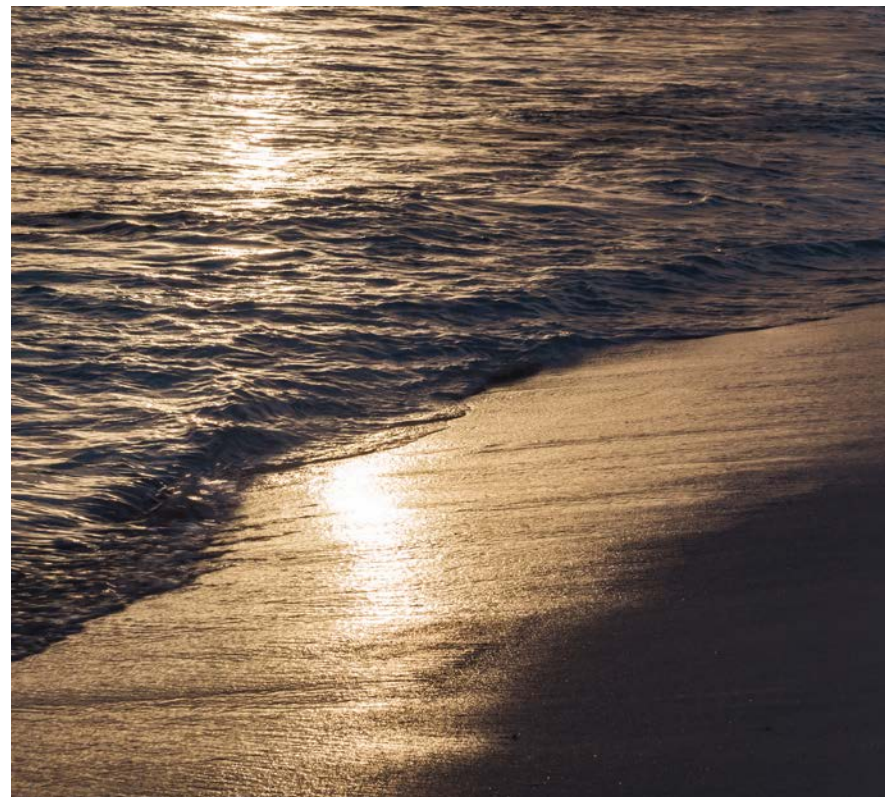
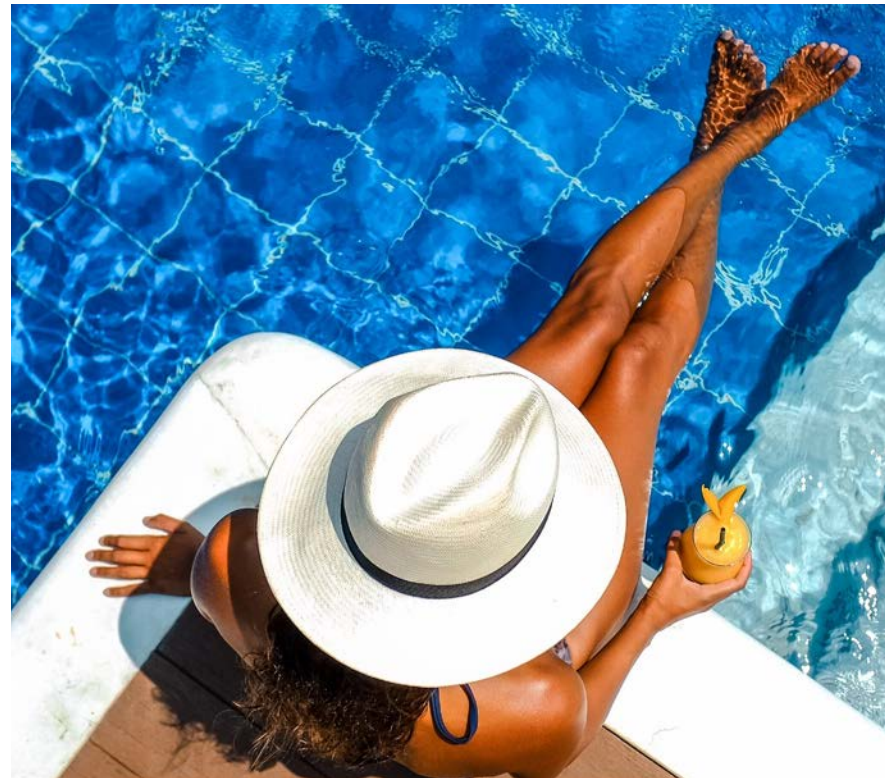
10mn	AEROPORT JULIANA
10mn	SIMPSON BAY
10mn	GOLF MULLET
15 mn	GRAND CASE
15 mn	MAHO
20mn	PHILIPSBURG
30mn	OYSTER POND
30mn	ANSE MARCEL



0 5 Km



L'ESSENCE



SAINT-MARTIN

LE CONCEPT

A UNIQUE PLACE ON SAINT-MARTIN ISLAND,
BETWEEN HISTORY AND TRADITIONS,
IT COMBINES WONDERFULLY LEISURE AND
BUSINESS IN AN EXCEPTIONAL SETTING

Modern design

Natural materials

Unique position on Marigot Bay

Gourmet gastronomy

At the heart of island activities

An aerial photograph of a tropical coastline. The foreground is dominated by clear, turquoise water. In the middle ground, a coastal town with numerous buildings is visible, nestled between the water and a range of green, hilly mountains. The sky is a vibrant blue, dotted with several large, white, fluffy clouds. The overall scene is bright and scenic, suggesting a tropical location.

THE PROJECT



Entrance side building



Sea side building

SAINT-MARTIN

L'OBJECTIF

HÔTEL 4* UPGRADE LIFESTYLE URBAN
RESORT MEETS INTERNATIONAL
CLIENTELE EXPECTATIONS

Superior quality services

Unforgettable experiences

Staying connected while disconnected

Leisure & Business

THE LOBBY

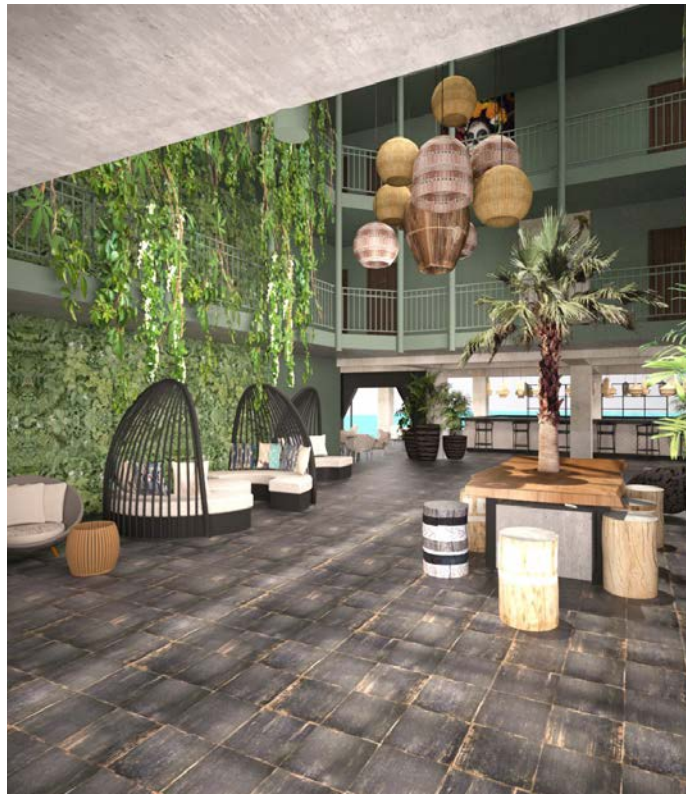




SAINT-MARTIN

LE CŒUR

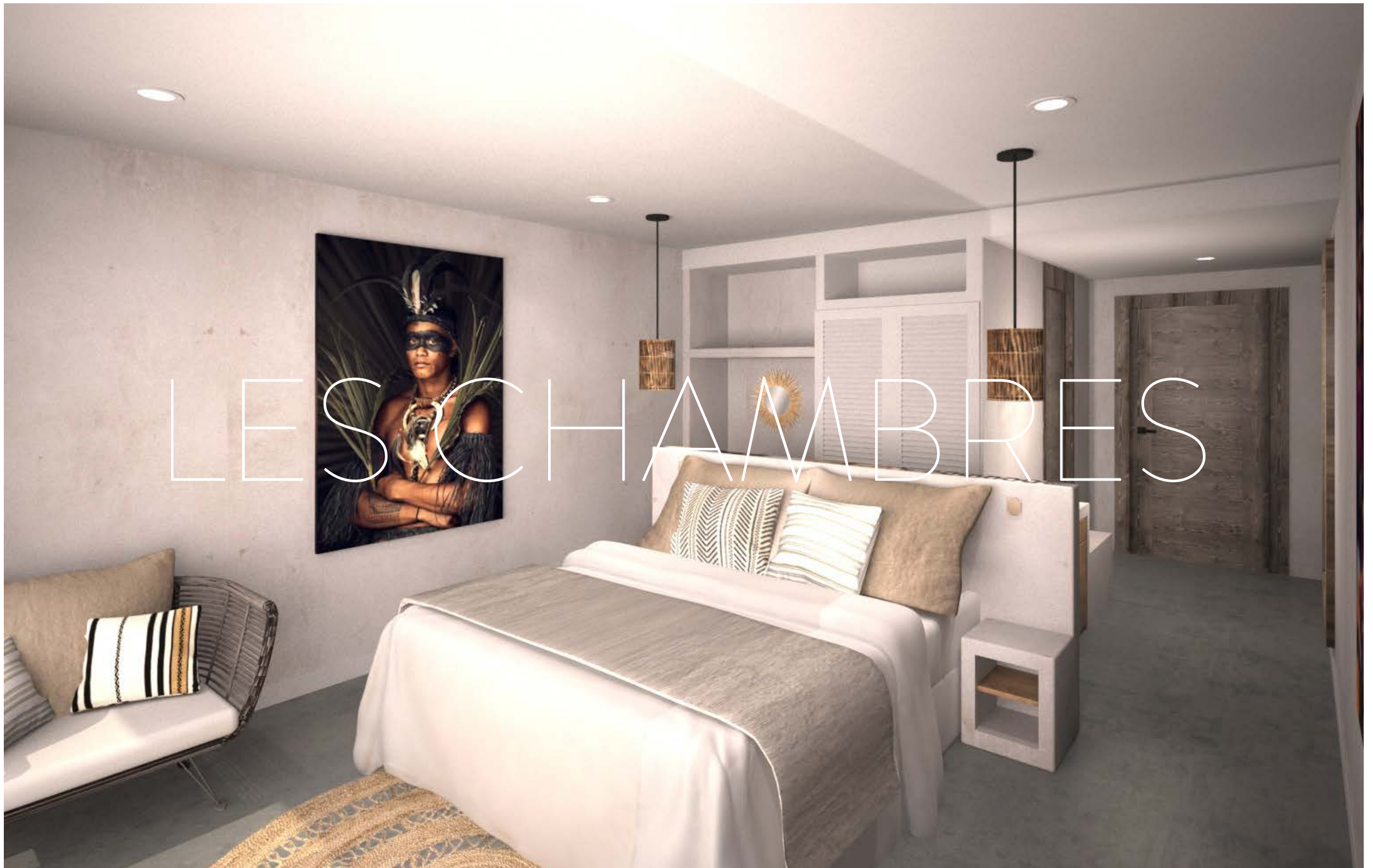
MANDATORY PASSAGE, THE LOBBY REFLECTS
THE AUTHENTIC, CHIC AND LIVING
ATMOSPHERE OF THE HOTEL

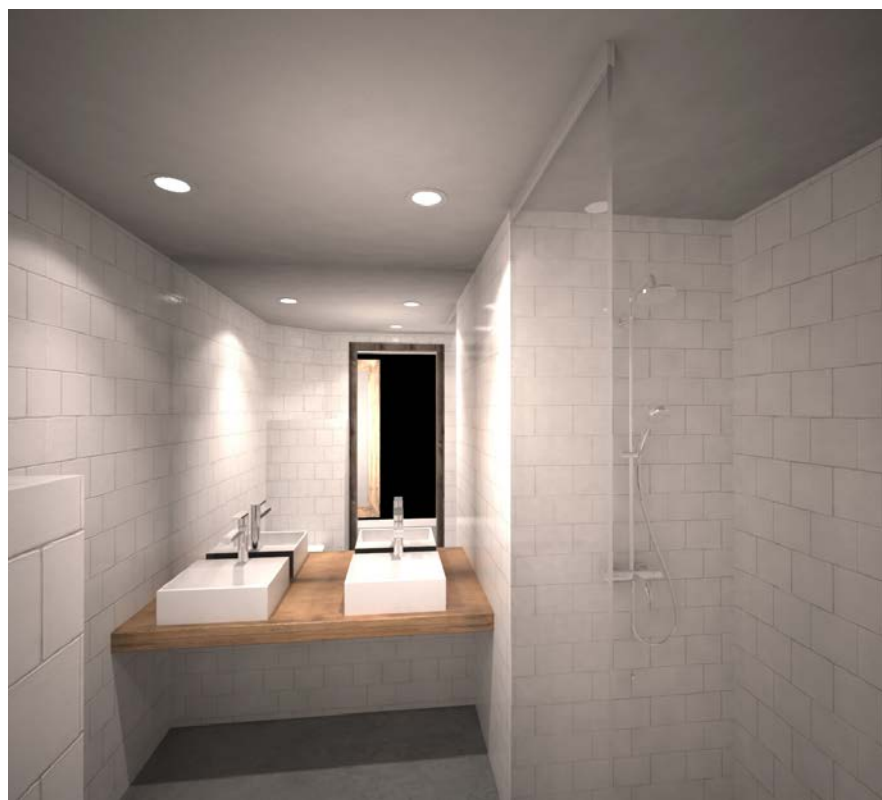
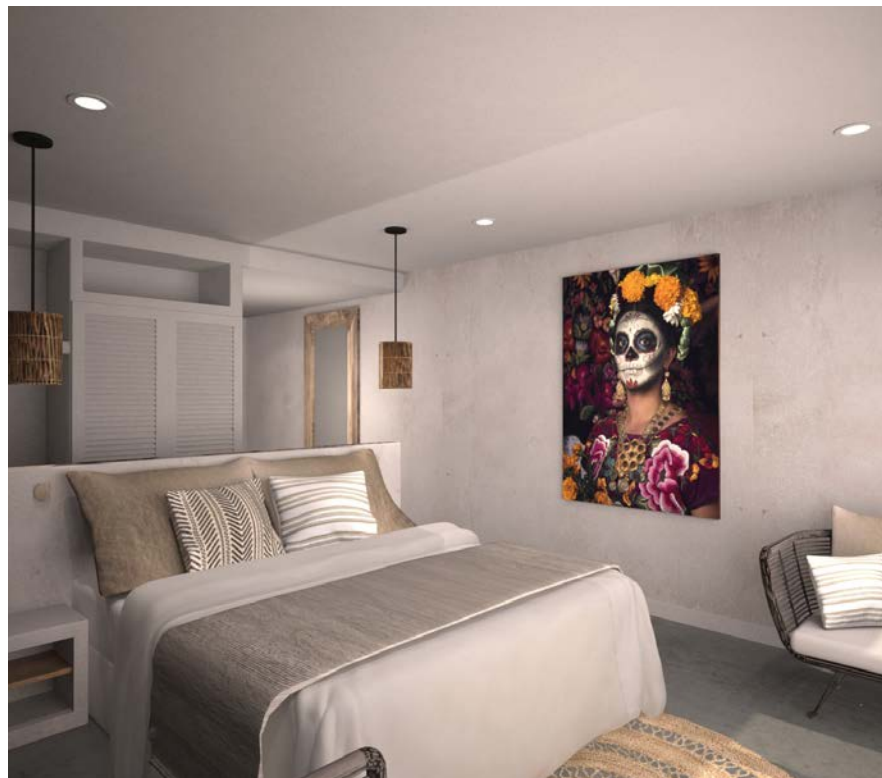


Lobby, place of life

Huge open space on the Caribbean Sea

LES CHAMBRES





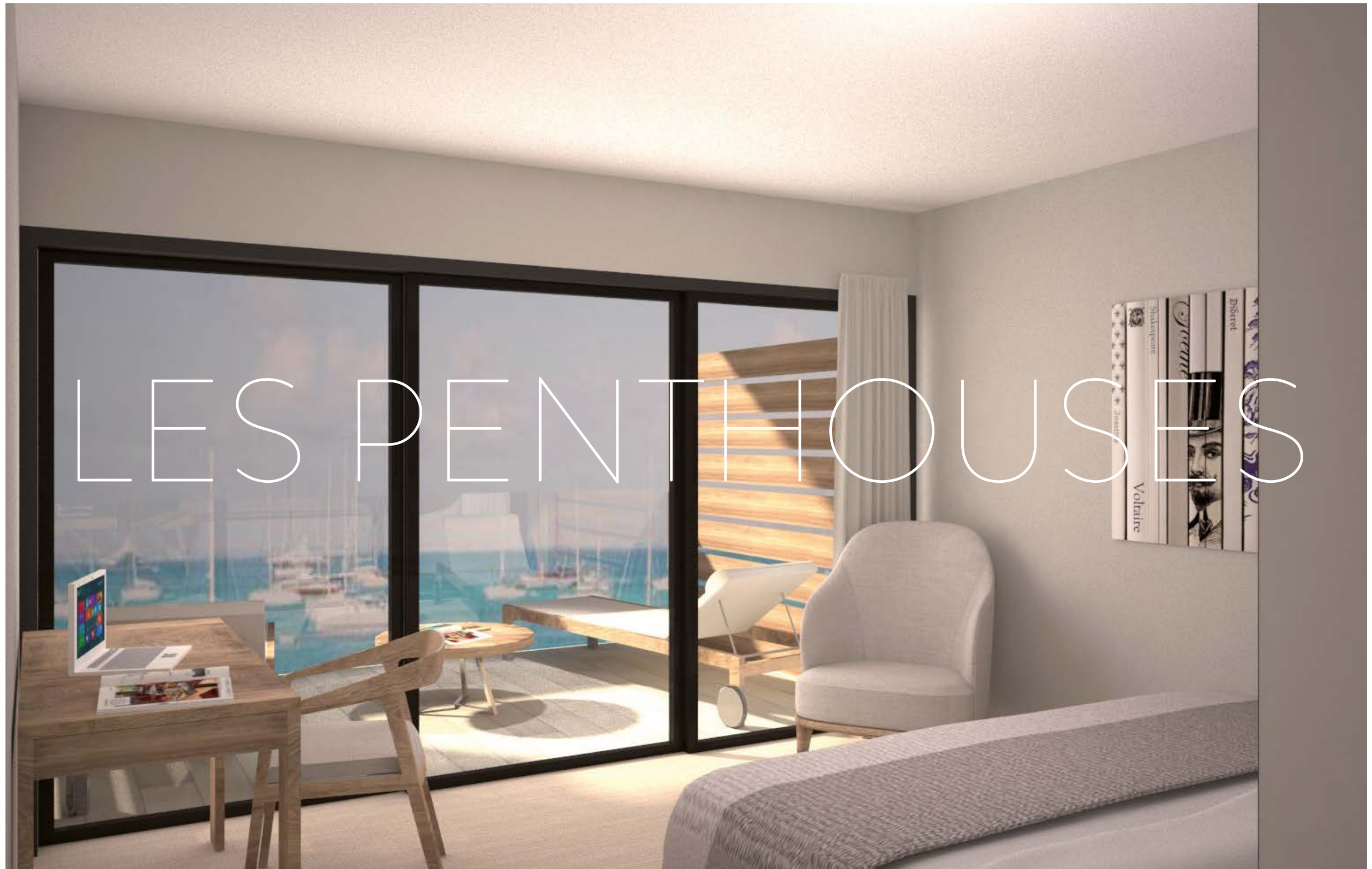
SAINT-MARTIN

HAVRE DE PAIX

COCOONING PLACE, TURNED OUTWARDS
WITH GENEROUS TERRACES

Inspired by the Caribbean heritage

Clean, simple and natural style



LES PENTHOUSES



SAINT-MARTIN

FLEXIBILITÉ

17 EXCLUSIVE ROOF TOP PENTHOUSES
BOASTING UNPARALLELED
FRONT SEA VIEW

Duplex penthouse delivering
in excess of 95 sqm.

Exclusive private deck/terraces
overlooking the bay.

2 bedrom with 2 ensuites bathroom.

LA PISCINE





SAINT-MARTIN

DÉTENTE

POOL OVERLOOKING
THE CARIBBEAN SEA:
THE BEST PLACE TO RELAX

Swimming area

Relaxation area: deckchairs and parasols

Waterfall, banquettes, bubble beds

Close to the bar and hotel's entertainment



An aerial photograph of a beach and ocean. The left side shows the sandy beach with some footprints, and the right side shows the turquoise ocean with gentle waves. The text 'LE BEACH CLUB' is overlaid in the center in a white, thin, sans-serif font.

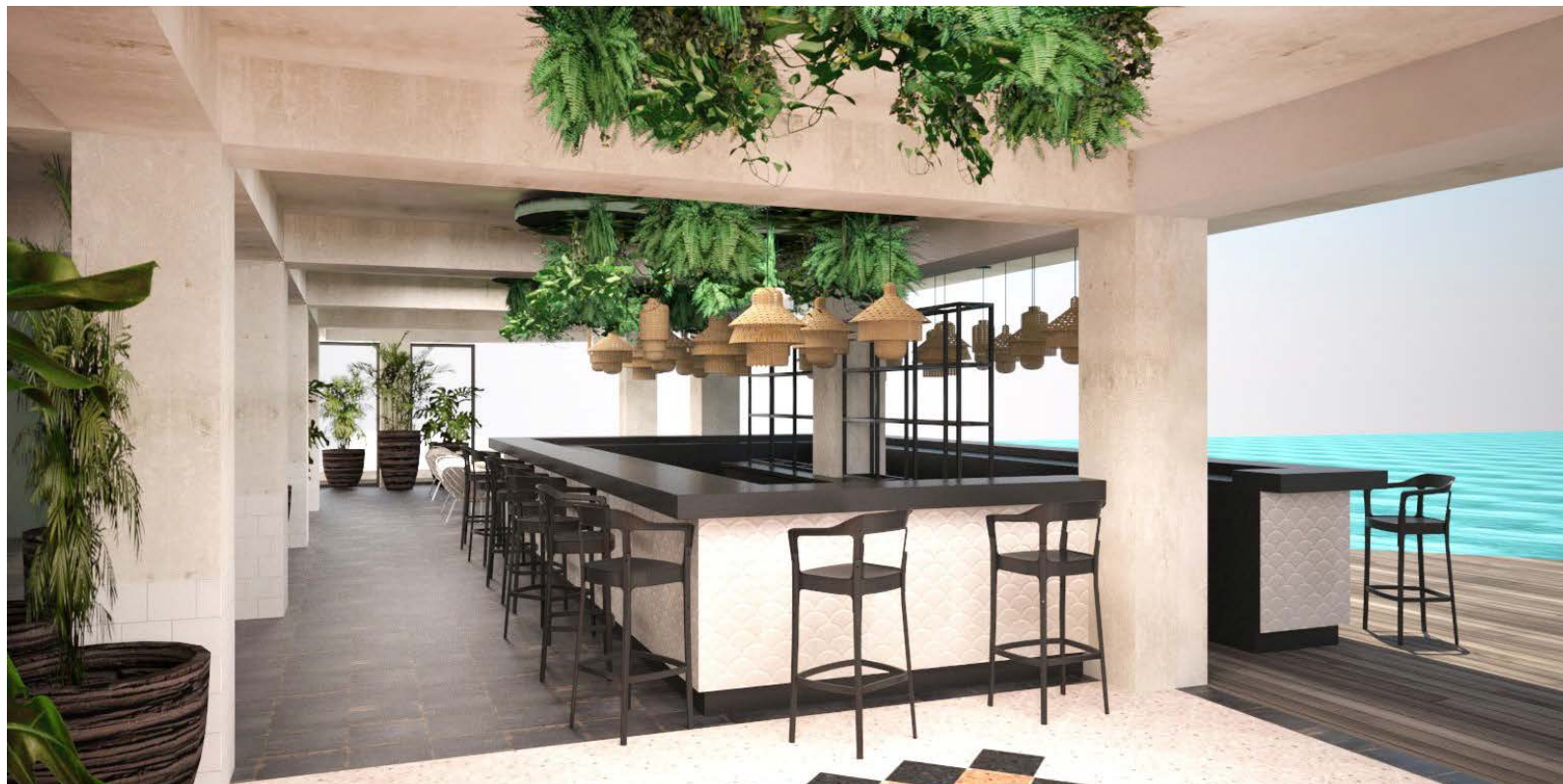
LE BEACH CLUB



SAINT-MARTIN

LA PLAGE

THE BEACH CLUB, THE ENTERTAINMENT PLACE
OF THE HOTEL, IS ALSO ACCESSIBLE BY BOAT
VIA THE PRIVATE PONTOON



Private beach and white sand

Bar: Home selection of cocktails and wines

Restaurant: Fresh products, local and
authentic cuisine, "finger foods"

Ecological water activities:
paddles, snorkeling, kayak

Deckchairs and umbrellas isolated





SAINT-MARTIN

SPACIEUX

ULTIMATE PLACE OF RELAXATION,
THE SPA IS AVAILABLE TO HOTEL GUESTS
AND LOCALS



Arawak inspired zen atmosphere

Soothing place, perfect for relaxation and rest

Massages, hammam and sauna

Meditation yoga, tai chi, dance pilates

Daily pass and monthly subscription



CONFERENCE



SAINT-MARTIN

TOUS ENSEMBLE

A NEW WORKING VISION THAT
COMBINES AUTONOMY AND COLLABORATION

240m² adjustable

Up to 200 people

2 meeting rooms

Coworking space and alcoves

An aerial photograph of a tropical bay. The water is a vibrant turquoise color, with visible sandy patches and coral reefs beneath the surface. In the distance, a small town with colorful buildings is nestled on a hillside, surrounded by lush greenery. The background features rolling hills and mountains under a clear blue sky with scattered white clouds. Several small boats are visible on the water.

ROOFTOP



SAINT-MARTIN

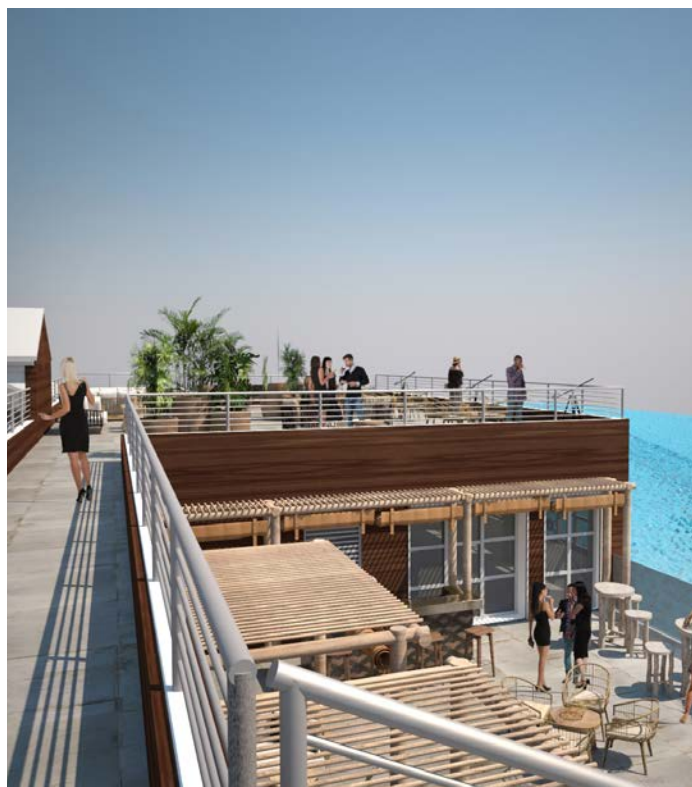
TOIT AVEC VUE

THIS PRIVILEGED SPACE
WITH A 360° PANORAMIC VIEW ON
MARIGOT BAY AND ANGUILLA ISLANDS,
IS THE PERFECT MEETING PLACE

Unique open terrace

With friends or colleagues over a drink

Enjoy the 360° view on Caribbean Sea





ROOFTOP RESTAURANT



SAINT-MARTIN

LE RESTAURANT

LOCATED ON THE ROOF TOP,
THIS IS THE SUBTLE ALLIANCE OF
GASTRONOMY AND FRENCH LUXURY

Signature restaurant

Fresh and authentic cuisine

Vegan, vegetarian, gluten free



BAIE DE MARIGOT

DIGUE

SAINT-MARTIN

PLAN DE MASSE

PLAGE

PISCINE

SANTA MARIA

ZONE ARAWAK

NINA

PINTA

PARKING

BN 49

PARKING

BN 45

PARKING

PARKING

PARKING

PARKING

PARKING

BN 43

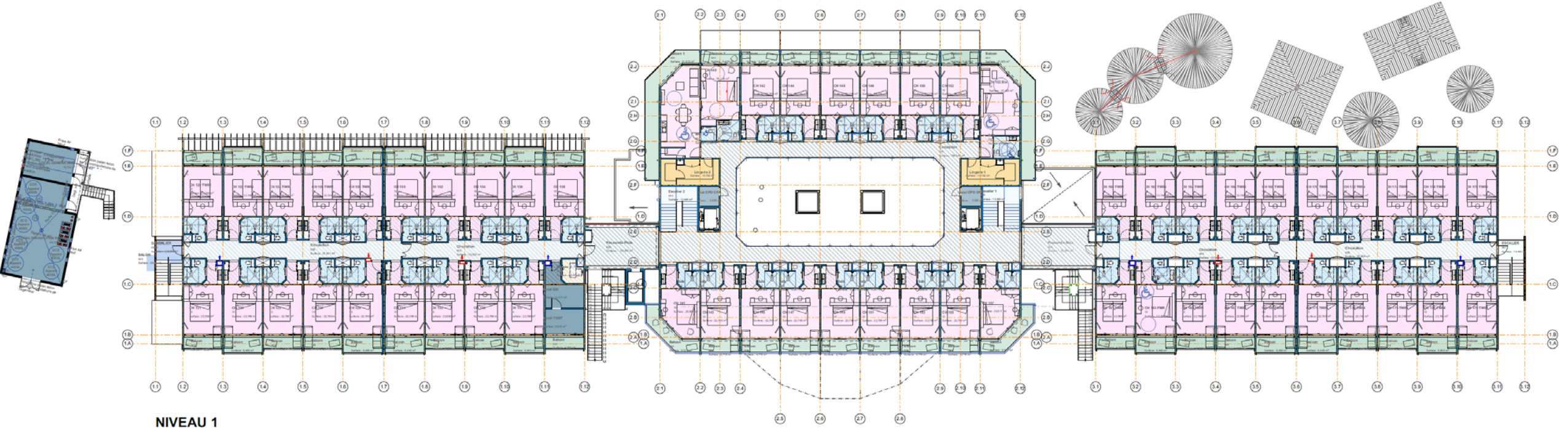
AE 352

GROUND FLOOR
BUILDINGS



FLOOR 1

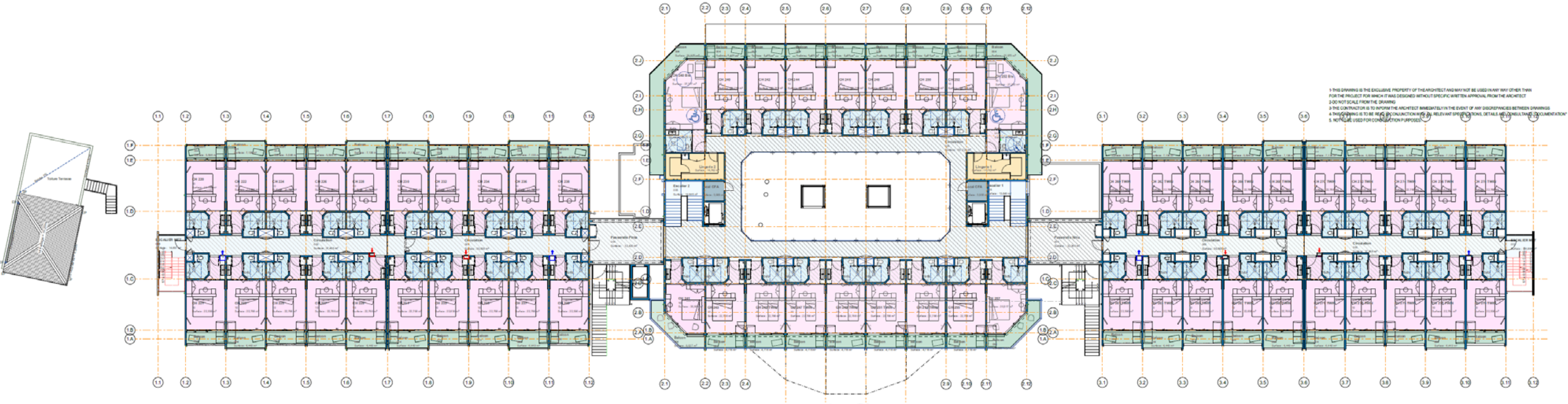
BUILDINGS



NIVEAU 1

FLOOR 2

BUILDINGS

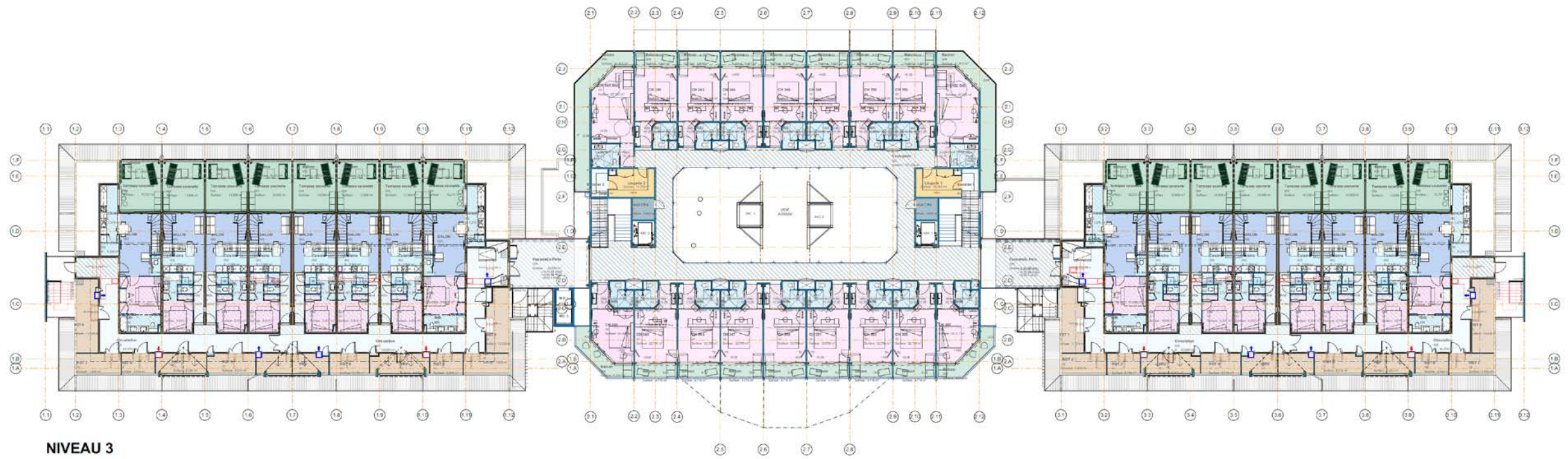


NIVEAU 2

1. THIS DRAWING IS THE EXCLUSIVE PROPERTY OF THE ARCHITECT AND MAY NOT BE USED IN ANY OTHER FORM FOR THE PROJECT FOR WHICH IT WAS DESIGNED WITHOUT SPECIFIC WRITTEN APPROVAL FROM THE ARCHITECT.
2. DO NOT SCALE FROM THE DRAWING.
3. THE CONTRACTOR IS TO INFORM THE ARCHITECT IMMEDIATELY IN THE EVENT OF ANY DISCREPANCIES BETWEEN DRAWINGS.
4. THIS DRAWING IS TO BE USED FOR CONSTRUCTION PURPOSES ONLY. RELEVANT SPECIFICATIONS, DETAILS AND CONSULTING DOCUMENTATION.
5. NOT TO BE USED FOR CONSTRUCTION PURPOSES.

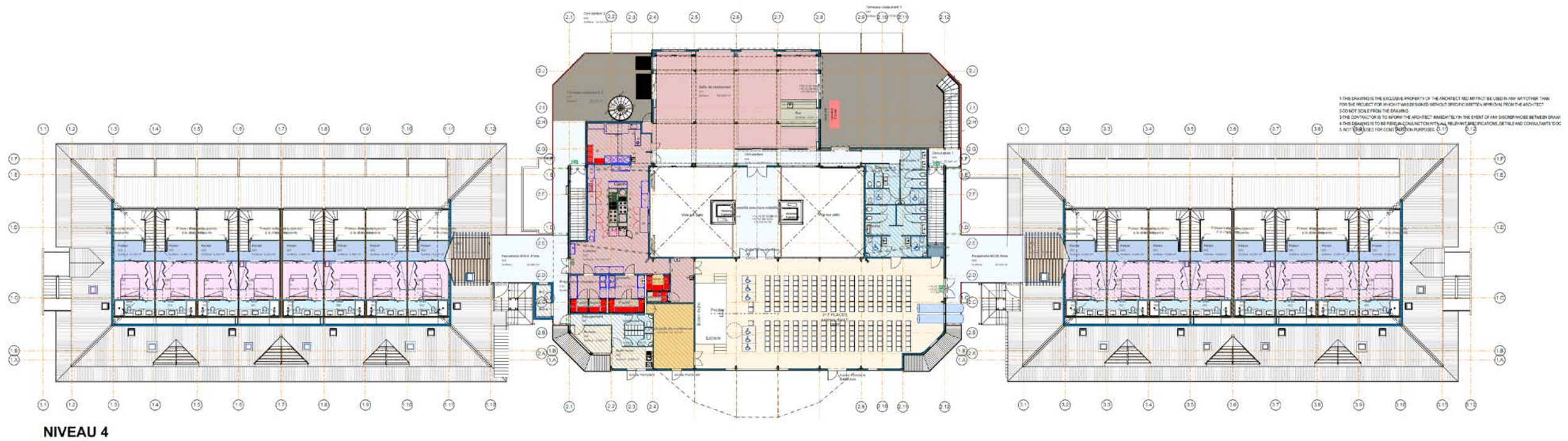
FLOOR 3

BUILDINGS



FLOOR 4

BUILDINGS



SAINT-MARTIN

BEACH HOTEL

SUPERFICIE DES ESPACES BÂTIS
ENVIRON 10 250 M²

141
CHAMBRES

17
APPARTEMENTS
2 CHAMBRES

38
PLACES
PARKING HOTEL

73
PLACES
PARKING PUBLIC

LOBBY

SPA / BIEN-ÊTRE

CO-WORKING

PLAGE

PISCINE

**BAR / SNACK
RDC**

**RESTAURANT
ROOFTOP**

**TERRASSE
TOP5**

**CENTRE
CONFÉRENCE**

A dense, dark green background of tropical palm fronds, creating a lush and textured environment. The fronds are long and slender, with some showing lighter green highlights where they catch the light.

BEACH HOTEL

CARIBBEAN ART DE VIVRE

(NEW NAME PENDING)

SAINT-MARTIN FRENCH WEST INDIES